



# TUNNEL DRAINAGE

**Tunnel Drainage, with it's  $\frac{3}{4}$ " (20mm) dimples, provides permanent protection for tunnels and other underground structures that are exposed to heavy groundwater flow.**



**Under Slab Drainage**

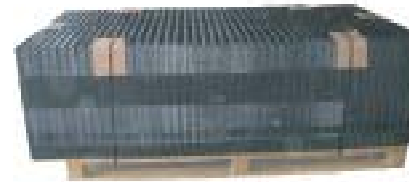


**Green Roof Drainage  
Manufactured Perforated**

**Shotcrete Shell, St. Gotthard Base Tunnel, Switzerland  
Tunnel Drainage used, 1.4 million ft<sup>2</sup> (130,000 m<sup>2</sup>)**

## Heavy Duty High Flow Drainage

PART #	ROLL/SHEET SIZES
DSRT67065	6'7 x 65.5' - 431ft <sup>2</sup> - (2m x 10m)
DSRT82065	8'2 x 65.5' - 540ft <sup>2</sup> - (2.5m x 20m)
DSSTNonPerf	47.25" x 98.5" - 32.3ft <sup>2</sup> - (1.2m x 2.5m)
DSSTPERFF	47.25" x 98.5" - 32.3ft <sup>2</sup> - (1.2m x 2.5m)



**Also available perforated and in panels**

### SPECIFICATIONS

Dimpled Sheet	High Density Polyethylene (HDPE)
Compressive Strength	3200 psf (150 kN/m <sup>2</sup> )
Dimple Thickness	40mil (1mm)
Dimple Height	.79" (20mm)
Drainage Capacity	45 gal/min/ft (600 l/min/m)

### AREAS OF APPLICATION

- Tunnels and rock surfaces
- Gunite or Shotcrete diaphragm walls and shells
- Land bank stabilization
- Roof garden drainage
- Horticulture seedlings
- Split slab / remediation
- Mining shafts
- Soil and gravel stabilization



# SUPERSEAL

Construction Products Ltd.

Phone: 1-800-571-1877  
Fax: 604-576-2458

www.superseal.ca  
info@superseal.ca

## SUPERSEAL Tunnel Drainage Product Specification Sheet

Properties	Values
Dimpled Membrane	High-Density Polyethylene (HDPE)
Color - Dimpled Sheet	Black
Thickness - Membrane	1.0mm (40 mil)
Area Weight (approx)	1000 g/m <sup>2</sup>
Dimple Height	20 mm (0.79")
Dimple Spacing (approx)	400 per m <sup>2</sup>
Air Gap Between Dimples	14 l/m <sup>2</sup>
Diameter of perforations	3mm (0.12")
Drainage Capacity (approx)	10 l/s/m 600 l/min/m 36,000 l/h/m 15 gal/min/ft
Compressive Strength	150 kN/m <sup>2</sup> (3200 psf)
Service Temperature Range	-40°C to +80°C
Physiological Properties	Can be ordered non-polluting for drinking water

The Dimpled Sheet is resistant to a wide range of chemicals, resistant to fungus and bacterial attack, impervious to root penetration and rot proof.

### Areas of Application

- Land bank stabilization and drainage in conjunction with shotcrete
- Lagging walls
- Tunnels
- Highway construction
- Underfloor slabs
- Subfloor applications
- Plaza decks
- Earth shelters
- Airports, runways
- Redirection of water influx to a collection system
- Permanent shuttering

PART #	ROLL/SHEET SIZES
DSRT67065	6'7 x 65.5' - 431ft <sup>2</sup> - (2m x 10m)
DSRT82065	8'2 x 65.5' - 540ft <sup>2</sup> - (2.5m x 20m)
DSSTNonPerf	47.25" x 98.5" - 32.3ft <sup>2</sup> - (1.2m x 2.5m)
DSSTPERFF	47.25" x 98.5" - 32.3ft <sup>2</sup> - (1.2m x 2.5m)

**Also available perforated and in panels**