

PRODUCT INFORMATION

INSTANT-SET WATERPROOFING

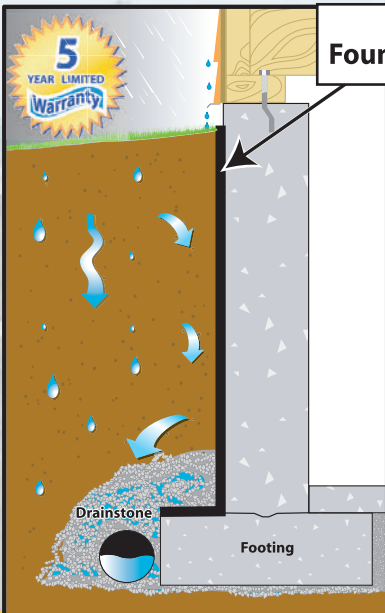
SUPERSEAL Waterproofing is a water-based, elastomeric, asphalt emulsion, with an instant-set accelerant. **SUPERSEAL Waterproofing;**

- ✓ Sets firm to the touch in 1 second
- ✓ Allows you work in less than ideal weather conditions
- ✓ Spray to desired thickness in one application
- ✓ Reduces material waste
- ✓ Ensures a consistent coating from top to bottom

AREAS OF APPLICATION

SUPERSEAL Waterproofing can be used on all types of foundations including:

- Concrete & Concrete Block
- Insulated Concrete Forms (ICF)
- Wood Foundations
- Shotcrete & Blindside Applications



SUPERSEAL
Foundation Waterproofing

TOTAL COVERAGE		
Mils Cured	Per 55g Drum	Per 275g Tote
40 mils	1,650 ft ²	8,250 ft ²
60 mils	1,100 ft ²	5,500 ft ²
80 mils	825 ft ²	4,125 ft ²

(totals may vary based on application)

COVERAGE TABLE				
Mils Wet	Mils Dry	MM Dry	Sq Ft Gal	
60	40	1.02	30	
90	60	1.53	20	
120	80	2.04	15	

5 YEAR LIMITED WARRANTY

GAME CHANGING ELECTRIC PUMP

THE SUPERSEAL ADVANTAGE

Typical waterproofing pumps are large, heavy, hard to maintain and can cost upwards of \$20,000.00

SUPERSEAL's Electric Pump system is unmatched on the market today.

SUPERSEAL packs power and durability into an incredibly easy to use, and portable pump, at a fraction of the price.



Contractors, ask us how you can get your **SUPERSEAL Pump for FREE!**

The SUPERSEAL Electric Pump Includes;

- Dual headed spray gun & tips
- 100' hoses for waterproofing and accelerant (Extra lengths of hose available)
- Wet film thickness gauge

CONTRACTOR BENEFITS

SUPERSEAL's Waterproofing System is incredibly easy to use for builders and contractors with all levels of experience.

- Wholesale & volume pricing
- Available in totes and drums
- Building code compliant
- Leak free warranty



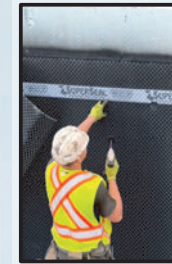
We invite all trades to be a part of the **SUPERSEAL** team. Become a contractor today at superseal.ca

PART #	PRODUCT
FW02750	275 Gallon Tote
FW00055	55 Gallon Drum
ACC100G	Accelerant Green (5g)
ACC100R	Accelerant Red (5g)
BG00500	Brush Mastic (5g)
TG00055	Trowel Mastic (5g)
LP1000	Pump System

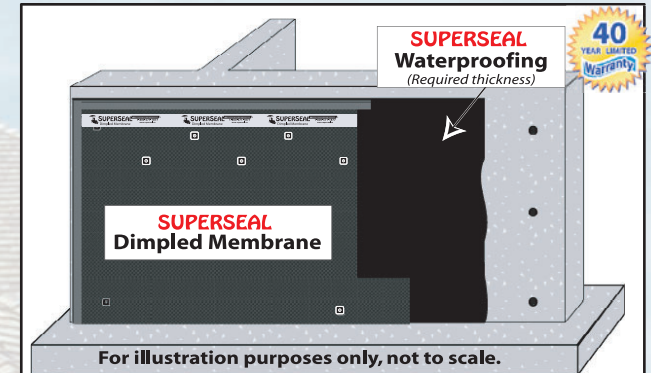


COMPLETE HOME PROTECTION

THE PERFECT COMPLIMENT



SUPERSEAL's Dimpled Membrane and Drainage Mats, provide superior protection and drainage for your home. They can increase your warranty and give you peace of mind. You can rest easy knowing that **SUPERSEAL** has your back.

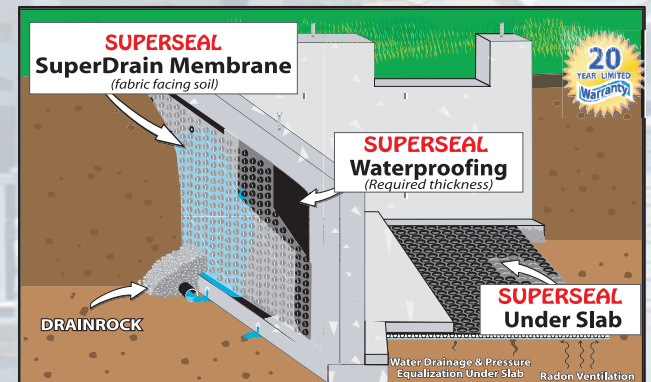


SUPERSEAL
Waterproofing
(Required thickness)

SUPERSEAL
Dimpled Membrane

For illustration purposes only, not to scale.

SUPERSEAL Dimpled Membrane protects the waterproof coating from backfill, removes 100% of the headwater pressure off the face of the wall, and creates a drainage space for moisture.



SUPERSEAL
SuperDrain Membrane
(fabric facing soil)

SUPERSEAL
Waterproofing
(Required thickness)

SUPERSEAL
Under Slab

Water Drainage & Pressure Equalization Under Slab Radon Ventilation

SUPERSEAL SuperDrain Membrane controls the flow of water providing drainage away from your foundation. This creates, dryer and lighter soil loads, and reduces the stress on your foundation.

SUPERSEAL KEEPS YOUR HOME DRY

QUICK & EASY INSTALLATION

EASY AS 1 - 2 - 3



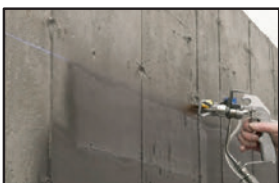
Step 1

- Clean the footing and wall of loose debris or standing water.
- Mark the grade height of areas to be waterproofed



Step 2

- Patch all tie holes, pour lines, or honeycombing with mastic or non-shrink grout.



Step 3

- Apply **SUPERSEAL** Waterproofing to the desired thickness
- Install **SUPERSEAL** Dimples or SuperDrain Membrane (Optional)

For complete installation instructions and training videos go to www.superseal.ca

Concrete & Concrete Block



Insulated Concrete Forms (ICF)



WARRANTY & APPROVALS

FOUNDATIONS DO CRACK

Most foundations experience cracks soon after being poured. **SUPERSEAL**'s highly elastic properties allow for expansion and contraction of the foundation.



PERMANENT WATERPROOF BARRIER

SUPERSEAL Waterproofing is a water-based, instant-set coating that sets firm to the touch in 1 second. **SUPERSEAL**'s advanced technology creates a permanent waterproof barrier.

Contractors, ask us how you can get your **SUPERSEAL** Pump for **FREE!**



WARRANTY & APPROVALS

SUPERSEAL Waterproofing is test by an independent 3rd party. This evaluation process ensures the highest standards of building code compliance. **SUPERSEAL** is backed by a 5 year product warranty.

Code Compliance Research Report (CCRR) is accepted by code officials, architects, and engineers, throughout the U.S.A.



Canadian Construction Materials Centre (CCMC) is trusted by over 6,000 regulators across Canada.



SUPERSEAL CCRR, CCMC, Training Videos, Specifications, and MSDS are available online.

SUPERSEAL Construction Products Ltd.
1-800-571-1877 / www.superseal.ca



FOUNDATION WATERPROOFING

For over 15 years **SUPERSEAL** has been protecting Residential & Commercial projects of all sizes throughout North America



- ✓ Instant-Set / Water-Based
- ✓ Easy to Use / Low Cost
- ✓ Leak Free Warranty

Join our team, become a contractor today



GUARANTEED DRY BASEMENTS